



# ZX400/400i series

## *The best combination of Compact and Robust Design*

Innovating upon extensive customer feedbacks, GoDEX 's most cost-effective and space-saving Industrial printers, the ZX400/ZX400i series, integrates industrial utility with its high performance and exquisite design. The ZX400/ZX400i series not only remains its classic design, but also provides multiple outstanding features in this new model.



- Multiple connectivity
- Auto Calibration button included
- A full line of accessories
- Easy ribbon/ media loading
- Full-range adjustable label sensor

- 32-bit CPU that offers fast "first label out" throughput
- Fast print speed - up to 6 ips
- Upgrade version for 2.4" Color TFT LCD and operation panel for easy and intuitive operation

# ZX400/400i series

## Thermal Transfer Light Industrial Printer

| Model Name                        | ZX420   | ZX420i  | ZX430   | ZX430i  |
|-----------------------------------|---|---|---|---|
| Print Method                      | Thermal Transfer / Direct Thermal   |   |   |   |
| Resolution                        | 203 dpi (8 dots/mm)   |   | 300 dpi (12 dot/mm)   |   |
| Print Speed                       | 6 ips (152 mm/s)  |   | 4 ips (102 mm/s)  |   |
| Print Width                       | 4.25" (108mm)   |   | 4.16" (105.7mm)   |   |
| Print Length                      | Min. 0.16" (4 mm)**; Max. 157.44" (3999mm)  |   | Min. 0.16" (4 mm)**; Max. 73.19"(1859 mm)   |   |
| Processor                         | 32-bit RISC CPU   |   |   |   |
| Memory                            | 128 MB Flash (60 MB for user storage)   |   |   |   |
| Flash SDRAM                       | 32 MB   |   |   |   |
| Sensor Type                       | Adjustable reflective sensor and transmissive sensor, left aligned  |   |   |   |
| Type                              | Continuous form, gap labels, black mark sensing, and punched hole; label length set by auto sensing or programming  |   |   |   |
| Width                             | Tear : Min. 1" (25.4 mm) – Max. 4.64" (118 mm)<br>Cutter : Max. 4.61" (117 mm)  |   |   |   |
| Media Thickness                   | Dispenser / Rewind : Max. 4.64" (118 mm)<br>Min. 0.003" (0.076 mm) – Max. 0.01" (0.25 mm)   |   |   |   |
| Label roll diameter               | Max. 8" (203.2 mm) with 3" (76.2 mm) core   |   |   |   |
| Core diameter                     | Max. 6" (152.4 mm) with 1.5" (38.1 mm) core<br>Max. 5" (127 mm) with 1" (25.4 mm) core<br>Min. 1" (25.4 mm) – Max. 3" (76.2 mm)   |   |   |   |
| Ribbon Types                      | Wax, wax/resin, resin   |   |   |   |
| Ribbon Length                     | Max. 1476' (450 m)  |   |   |   |
| Ribbon Width                      | Min. 1.18" (30 mm) – Max. 4.33" (110 mm)  |   |   |   |
| Ribbon roll diameter              | 3" (76.2 mm)  |   |   |   |
| Ribbon Core diameter              | 1" (25.4 mm)  |   |   |   |
| Printer Language                  | EZPL, GEPL, GZPL auto switch  |   |   |   |
| Software Label design software    | GoLabel (for EZPL only)   |   |   |   |
| Driver                            | Windows 2000, XP, Vista, Windows 7, 8.1 and 10 , Windows Server 2003 & 2008 、 MAC 、 Linux   |   |   |   |
| DLL                               | Win CE, .NET, Andriod, Windows Mobile, Windows 2000 / XP / VISTA / 7 / 8.1 / 10   |   |   |   |
| Resident Fonts Bitmap Fonts       | Bitmap fonts 90°, 180°, 270° rotatable, single characters 90°, 180°, 270° rotatable   |   |   |   |
| TTF Fonts                         | Bitmap fonts 8 times expandable in horizontal and vertical directions<br>TTF Fonts (Bold / Italic / Underline ). 0°,90°, 180°, 270° rotatable   |   |   |   |
| Download Fonts Bitmap Fonts       | 90°, 180°, 270° rotatable, single characters 90°, 180°, 270° rotatable  |   |   |   |
| Asian Fonts                       | 16x16, 24x24. Traditional Chinese (BIG-5), Simplified Chinese (GB2312), Japanese (S-JIS), Korean (KS-X1001)   |   |   |   |
| TTF Fonts                         | 90°, 180°, 270° rotatable and 8 times expandable in horizontal and vertical directions<br>TTF Fonts (Bold / Italic / Underline ). 0°,90°, 180°, 270° rotatable  |   |   |   |
| 1-D Bar Codes                     | China Postal Code, Codabar, Code 11, Code 32, Code 39, Code 93, Code 128 (subset A, B, C), EAN-8, EAN-13, EAN 8/13 (with 2 & 5 digits extension), EAN 128, FIM, German Post Code, GS1 DataBar, HIBC, Industrial 2 of 5 , Interleaved 2-of-5 (1 of 5), Interleaved 2- of 5 with Shipping Bearer Bars, ISBT – 128, ITF 14, Japanese Postnet, Logmars, MSI, Postnet, Plessey, Planet 11 & 13 digit, RPS 128, Random Weight, Standard 2 of 5, Telepen, UPC-A, UPC-E, UPC-A and UPC-E with EAN 2 or 5 digit extension, UCC 128, UCC/EAN-128 K-Mart |   |   |   |
| 2-D Bar Codes                     | Aztec code, Code 49, Codablock F , Datamatrix code, MaxiCode, Micro PDF417, Micro QR code, PDF417, QR code, TLC 39  |   |   |   |
| Code Pages                        | Codepage 437, 737, 850, 851, 852, 855, 857, 860, 861, 862, 863, 865, 866, 869,<br>Windows 1250, 1251, 1252, 1253, 1254, 1255, 1257<br>Unicode UTF8 、 UTF16BE 、 UTF16LE  |   |   |   |
| Graphics                          | Resident graphic file types are BMP and PCX, other graphic formats are downloadable from the software   |   |   |   |
| Interfaces                        | <ul style="list-style-type: none"> <li>• USB 2.0 (B-Type)</li> </ul>  | <ul style="list-style-type: none"> <li>• USB 2.0 (B-Type)</li> <li>• Serial port: RS-232 (DB-9)</li> <li>• IEEE 802.3 10/100 Base-Tx</li> <li>• Ethernet port (RJ-45)</li> <li>• USB Host (A-Type)</li> </ul>   | <ul style="list-style-type: none"> <li>• USB 2.0 (B-Type)</li> </ul>  | <ul style="list-style-type: none"> <li>• USB 2.0 (B-Type)</li> <li>• Serial port: RS-232 (DB-9)</li> <li>• IEEE 802.3 10/100 Base-Tx</li> <li>• Ethernet port (RJ-45)</li> <li>• USB Host (A-Type)</li> </ul>   |
| Control Panel                     | <ul style="list-style-type: none"> <li>• 1 Power on/standby button with green color LED backlight</li> <li>• 1 Calibration button at rear panel</li> <li>• 1 Control key : FEED / PAUSE / CANCEL with dual color LED backlight: Ready (Green); Error (Red)</li> </ul>   | <ul style="list-style-type: none"> <li>• Color TFT LCD with navigation button</li> <li>• 1 Power on/standby button with green color LED backlight</li> <li>• 1 Calibration button at rear panel</li> <li>• 1 Control key : FEED / PAUSE / CANCEL with dual color LED backlight: Ready (Green); Error (Red)</li> </ul> | <ul style="list-style-type: none"> <li>• 1 Power on/standby button with green color LED backlight</li> <li>• 1 Calibration button at rear panel</li> <li>• 1 Control key : FEED / PAUSE / CANCEL with dual color LED backlight: Ready (Green); Error (Red)</li> </ul> | <ul style="list-style-type: none"> <li>• Color TFT LCD with navigation button</li> <li>• 1 Power on/standby button with green color LED backlight</li> <li>• 1 Calibration button at rear panel</li> <li>• 1 Control key : FEED / PAUSE / CANCEL with dual color LED backlight: Ready (Green); Error (Red)</li> </ul> |
| RTC                               | Standard  |   |   |   |
| Power                             | Auto Switching 100-240V AC, 50-60Hz   |   |   |   |
| Environment Operation temperature | 41°F to 104°F (5°C to 40°C)   |   |   |   |
| Storage temperature               | -4°F to 140°F (-20°C to 60°C)   |   |   |   |
| Humidity Operation                | 20-85%, non-condensing  |   |   |   |
| Storage                           | 10-90%, non-condensing  |   |   |   |
| Agency Approvals                  | CE (EMC) 、 FCC Class B 、 CB 、 UL 、 cUL 、 CCC  |   |   |   |
| Dimension Length                  | 15.86" (403 mm)   |   |   |   |
| Height                            | 10.79" (274 mm)   |   |   |   |
| Width                             | 10.24" (260 mm)   |   |   |   |
| Weight                            | 23.81lbs (10.8 Kg), excluding consumables   |   |   |   |
| Options                           | Cutter (Dealer Install)<br>Parallel port adaptor module (Centronic female 36-pin)(Dealer Install)<br>Bluetooth (Dealer Installer)<br>Wireless LAN (IEEE 802.11 b/g/n) (Dealer Install)<br>External label rewinder<br>Label Dispenser (Dealer Install)   |   |   |   |

\* Specifications are subject to change without notice. All company and/or product names are trademarks and/or registered trademarks of their respective owners.

\*\* Minimum print height and maximum print speed specification compliance can be dependent on non-standard material variables such as label type, thickness, spacing, liner construction, etc. GoDEX is pleased to test non-standard materials for minimum print height, and maximum print speed capability.



# Applications

## Applications for Labels & Barcodes

ZX400/400i series is as versatile as for most applications.



### Retail

Receipt, Ingredient label, Price tag, Content label, Registration receipt, Postal slip, etc.

### Warehouses, Logistic & Transportation

Stack label, Product label, Postal slip  
Storage management, Dispatch label, Packaging label, Delivery receipt, etc.

### Manufacturing

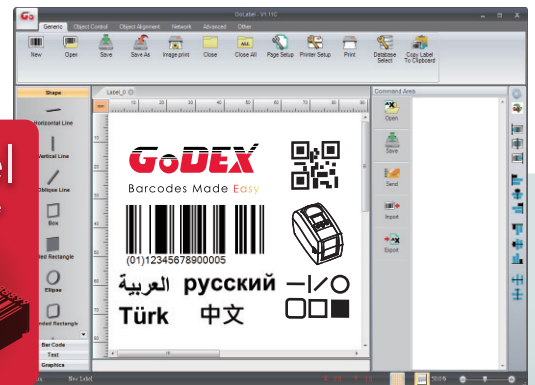
Product label, Content label, Packaging label, Administrative slip, In & Out record slip, etc.

## GoDEX LABEL DESIGN SOFTWARE

GoLabel Software / User Friendly

GoLabel is based on a WYSIWYG (what you see is what you get) user interface, makes everything so easy for you to create and print barcode labels. GoLabel is the first-choice label design software that you can't miss it!

Go visit [www.godexintl.com](http://www.godexintl.com) and download GoLabel to experience it!



## GoDEX RIBBONS

High quality GoDEX thermal transfer ribbons.

GoDEX offers premium thermal transfer ribbons that will fit most of your printing applications.

- Wax
- Wax/ Resin
- Resin
- Near Edge

