

DT Desktop Printers



DT2x / DT4x / DT4C*

Model	DT2x	DT4x	DT4C*
Print Method	Direct Thermal		
Resolution	203 dpi (8 dots/mm)		
Print Speed	7 IPS (177 mm/s)**		
Print Width	2.12" (54 mm)	4.25" (108 mm)	4.25" (108 mm)
Print Length	Min. 0.16" (4 mm)**; Max. 68" (1727 mm)		
Processor	32 Bit RISC CPU		
Memory Flash	4 MB Flash (2 MB for user storage)	8 MB Flash (4 MB for user storage)	128 MB Flash (60 MB for user storage)
SDRAM	16 MB	16 MB	32 MB
Interfaces	USB 2.0 (B-Type) Serial port: RS - 232 (DB-9) IEEE 802.3 10 / 100 Base - TX Ethernet port (RJ-45)		USB 2.0 (B-Type) Wifi

- Enhanced label feeding mechanism and instant label detection.
- Print speed: Up to 7" / 177 mm per second.
- Supports Ethernet, Serial and USB ports.

* Project only



Suggested applications:



** Specifications are subject to change without notice. Minimum print length and maximum print speed specification compliance can be dependent on non-standard material variables such as label type, thickness, spacing, liner construction, etc. GoDEX is pleased to test non-standard materials for minimum print height and maximum print speed capability.





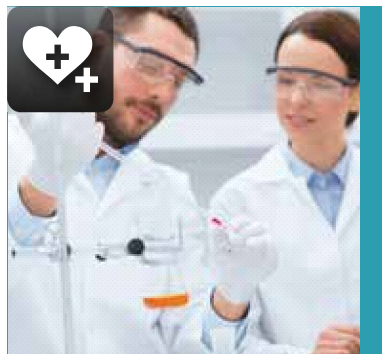
GE300 series

Model	GE300	GE330
Print Method	Thermal Transfer / Direct Thermal	
Resolution	203 dpi (8 dots/mm)	300 dpi (12 dots/mm)
Print Speed	5 IPS (127 mm/s)**	4 IPS (102 mm/s)**
Print Width	4.25" (108 mm)	4.16" (105.7 mm)
Print Length	Min. 0.16" (4 mm)**; Max. 68" (1727 mm)	Min. 0.16" (4 mm)**; Max. 30" (762 mm)
Processor	32 Bit RISC CPU	
Memory Flash	8 MB Flash (4 MB for user storage)	
SDRAM	16 MB SDRAM	
Interfaces	USB 2.0 Serial port: RS-232 (DB-9) Ethernet 10/100 Mbps	

- Ethernet, Serial and USB ports included.
- Uses standard low-cost labels and ribbons.
- Cost effective solution for entry level label printing requirements.
- 1/2" core ribbon up to 110M length ribbon capacity.



Suggested applications:



** Specifications are subject to change without notice. Minimum print length and maximum print speed specification compliance can be dependent on non-standard material variables such as label type, thickness, spacing, liner construction, etc. GoDEX is pleased to test non-standard materials for minimum print height and maximum print speed capability.





G500 series

Model	G500	G530
Print Method	Thermal Transfer / Direct Thermal	
Resolution	203 dpi (8 dots/mm)	300 dpi (12 dots/mm)
Print Speed	5 IPS (127 mm/s)**	4 IPS (102 mm/s)**
Print Width	4.25" (108 mm)	4.16" (105.7 mm)
Print Length	Min. 0.16" (4 mm)**; Max. 68" (1727 mm)	Min. 0.16" (4 mm)**; Max. 30" (762 mm)
Processor	32 Bit RISC CPU	
Memory Flash	8 MB Flash (4 MB for user storage)	
SDRAM	16 MB SDRAM	
Interfaces	USB 2.0 (B-Type)	USB 2.0 (B-Type) Serial port: RS-232 (DB-9) IEEE 802.3 10/100 Base-TX Ethernet port (RJ-45)

- 300 meter ribbon plus the optional label stand provides maximum printing volume.
- "Twin-Sensor" technology allows you to use a broad range of labels.
- Strong and stable mechanism design for long term reliability.
- Available interface combinations include: USB2.0, Serial and Ethernet



Suggested applications:



** Specifications are subject to change without notice. Minimum print length and maximum print speed specification compliance can be dependent on non-standard material variables such as label type, thickness, spacing, liner construction, etc. GoDEX is pleased to test non-standard materials for minimum print height and maximum print speed capability.

RT Desktop Printers



RT200 series

Model	RT200	RT230
Print Method	Thermal Transfer / Direct Thermal	
Resolution	203 dpi (8 dots/mm)	300 dpi (12 dots/mm)
Print Speed	5 IPS (127 mm/s)**	4 IPS (102 mm/s)**
Print Width	2.12" (54 mm)	2.24" (56.9 mm)
Print Length	Min. 0.16" (4 mm)**; Max. 68" (1727 mm)	Min. 0.16" (4 mm)**; Max. 30" (762 mm)
Processor	32 Bit RISC CPU	
Memory Flash	8 MB Flash (4 MB for user storage)	
SDRAM	16 MB SDRAM	
Interfaces	USB 2.0 (B-Type) Serial port: RS-232 (DB-9) IEEE 802.3 10/100 Base-TX Ethernet port (RJ-45)	

- Modern clam-shell design makes it simple to load labels.
- Ethernet, Serial and USB ports are standard features adding flexibility and power.
- Full-range adjustable sensor, enables printing of small and difficult labels.
- Innovative calibration button makes Label Calibration simple and fast.
- 1/2" core ribbon up to 110M ribbon capacity.



Suggested applications:



** Specifications are subject to change without notice. Minimum print length and maximum print speed specification compliance can be dependent on non-standard material variables such as label type, thickness, spacing, liner construction, etc. GoDEX is pleased to test non-standard materials for minimum print height and maximum print speed capability.



RT200i series

Model	RT200i	RT230i
Print Method	Thermal Transfer / Direct Thermal	
Resolution	203 dpi (8 dots/mm)	300 dpi (12 dots/mm)
Print Speed	7 IPS (177 mm/s)**	5 IPS (127 mm/s)**
Print Width	2.12" (54 mm)	2.24" (56.9 mm)
Print Length	Min. 0.16" (4 mm)**; Max. 68" (1727 mm)	Min. 0.16" (4 mm)**; Max. 30" (762 mm)
Processor	32 Bit RISC CPU	
Memory Flash	8 MB Flash (4 MB for user storage)	
SDRAM	16 MB SDRAM	
Interfaces	USB 2.0 (B-Type) Serial port: RS-232 (DB-9) IEEE 802.3 10/100 Base-TX Ethernet port (RJ-45) USB Host (A-Type)	

- Color LCD and operation panel for easy and intuitive operation.
- Modern clam-shell design makes it simple to load labels.
- Ethernet, USB 2.0, Serial and USB host are standard features adding flexibility and power.
- Innovative calibration button makes Label Calibration simple and fast.
- 1/2" core ribbon up to 110M ribbon capacity.
- Bluetooth as option (iOS and Android Support).



Suggested applications:



** Specifications are subject to change without notice. Minimum print length and maximum print speed specification compliance can be dependent on non-standard material variables such as label type, thickness, spacing, liner construction, etc. GoDEX is pleased to test non-standard materials for minimum print height and maximum print speed capability.

RT Desktop Printers



RT700 series

Model	RT700	RT730
Print Method	Thermal Transfer / Direct Thermal	
Resolution	203 dpi (8 dots/mm)	300 dpi (12 dots/mm)
Print Speed	Up to 5 IPS (127 mm/s)**	4 IPS (102 mm/s)**
Print Width	4.25" (108 mm)	4.16" (105.7 mm)
Print Length	Min. 0.16" (4 mm)**; Max. 68" (1727 mm)	Min. 0.16" (4 mm)**; Max. 30" (762 mm)
Processor	32 Bit RISC CPU	
Memory Flash	8 MB Flash (4 MB for user storage)	
SDRAM	16 MB SDRAM	
Interfaces	USB 2.0 (B-Type) Serial port: RS-232 (DB-9) IEEE 802.3 10/100 Base-TX Ethernet port (RJ-45) USB Host (A-Type)	

- Modern clam-shell design makes it simple to load labels.
- Ethernet, USB 2.0, Serial and USB host are standard features adding flexibility and power.
- "Twin – Sensor" technology allows you to use a broad range of labels.
- Innovative "C" button makes label Calibration simple and fast.
- 1" core 300M ribbon capacity.



Suggested applications:



** Specifications are subject to change without notice. Minimum print length and maximum print speed specification compliance can be dependent on non-standard material variables such as label type, thickness, spacing, liner construction, etc. GoDEX is pleased to test non-standard materials for minimum print height and maximum print speed capability.



Standalone
Label System
Scanner
Key Board
USB Disk

RT700i series

Model	RT700i	RT730i
Print Method	Thermal Transfer / Direct Thermal	
Resolution	203 dpi (8 dots/mm)	300 dpi (12 dots/mm)
Print Speed	Up to 7 IPS (177 mm/s)**	5 IPS (127 mm/s)**
Print Width	4.25" (108 mm)	4.16" (105.7 mm)
Print Length	Min. 0.16" (4 mm)**; Max. 68" (1727 mm)	Min. 0.16" (4 mm)**; Max. 30" (762 mm)
Processor	32 Bit RISC CPU	
Memory Flash	8 MB Flash (4 MB for user storage)	
SDRAM	16 MB SDRAM	
Interfaces	USB 2.0 (B-Type) Serial port: RS-232 (DB-9) IEEE 802.3 10/100 Base-TX Ethernet port (RJ-45) USB Host (A-Type)	

- Color TFT LCD and operation panel for easy and intuitive operation.
- Ethernet, USB 2.0, Serial and USB host are standard features adding flexibility and power.
- Rod-less label roll holder for easy loading and smooth feeding.
- Innovative "C" button makes label Calibration simple and fast.
- 1" core 300M ribbon capacity.
- Bluetooth (optional)



Suggested applications:



** Specifications are subject to change without notice. Minimum print length and maximum print speed specification compliance can be dependent on non-standard material variables such as label type, thickness, spacing, liner construction, etc. GoDEX is pleased to test non-standard materials for minimum print height and maximum print speed capability.

RT Desktop Printers



RT700iW series

Model	RT700iW	RT730iW
Print Method	Thermal Transfer / Direct Thermal	
Resolution	203 dpi (8 dots/mm)	300 dpi (12 dots/mm)
Print Speed	Up to 7 IPS (177 mm/s)**	5 IPS (127 mm/s)**
Print Width	4.25" (108 mm)	4.16" (105.7 mm)
Print Length	Min. 0.16" (4 mm)**; Max. 68" (1727 mm)	Min. 0.16" (4 mm)**; Max. 30" (762 mm)
Processor	32 Bit RISC CPU	
Memory Flash	128 MB Flash (60 MB for user storage)	
SDRAM	32 MB SDRAM	
Interfaces	USB 2.0 (B-Type), USB Host (A-Type) Serial port: RS-232 (DB-9) IEEE 802.3 10/100 Base-Tx Ethernet port (RJ-45) Parallel Port (Mini-Centronics)	

- USB2.0, USB host, Serial & parallel port, Ethernet, optional WIFI & Bluetooth module for multiple applications.
- 32 MB SDRAM and 128 MB Flash memory - including 60 MB available for user.
- 203 dpi (8 dots/mm) & 300 dpi (12 dots/mm) resolutions; print speed is up to 7"/177 mm per second.
- Supports 300 meter ribbon and 10 inch diameter label stand available for bulk printing.



Suggested applications:



** Specifications are subject to change without notice. Minimum print length and maximum print speed specification compliance can be dependent on non-standard material variables such as label type, thickness, spacing, liner construction, etc. GoDEX is pleased to test non-standard materials for minimum print height and maximum print speed capability.

RT Desktop Printers



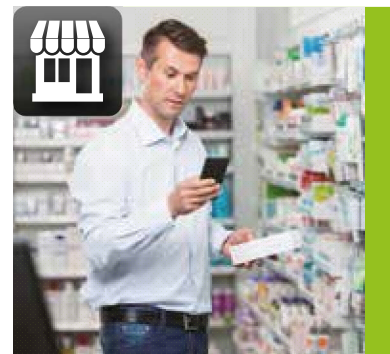
RT863i

Model	RT863i
Print Method	Thermal Transfer / Direct Thermal
Resolution	600 dpi (24 dots/mm)
Print Speed	3 IPS (76.2 mm/s)**
Print Width	4.16" (105.6 mm)
Print Length	Min. 0.16" (4 mm)**; Max. 15" (381 mm)
Processor	32 Bit RISC CPU
Memory Flash	128 MB Flash (60 MB for user storage)
SDRAM	32 MB SDRM
Interfaces	Serial port: RS-232 (DB-9) USB Device port (B-Type) IEEE 802.3 10/100 Base-TX Ethernet port (RJ-45) USB Host (A-Type) Parallel Port (Mini-Centronics)

- Large intuitive touch screen LCD allows the user to be in control.
- Ethernet, USB, Serial, and Parallel Ports Standard for easy integration.
- Drop-in label roll holder for easy media installation.
- Micro print at 600 dpi resolution.
- 1" core ribbon up to 300M length ribbon capacity.
- Bluetooth and WIFI as option



Suggested applications:



** Specifications are subject to change without notice. Minimum print length and maximum print speed specification compliance can be dependent on non-standard material variables such as label type, thickness, spacing, liner construction, etc. GoDEX is pleased to test non-standard materials for minimum print height and maximum print speed capability.